

Factory Step Installation Instructions

Part No's: 451001



Quality and Style that Endures

Follow the diagram and the written directions carefully for a proper, safe installation.

Should you encounter an unusual, unforeseen problem, contact our Technical Help Line 7:00 AM – 3:00 PM Pacific

Time

(951) 719-1068

Visit our web-site at

www.CARR.com

Carr Pattern Co., Inc.

Vehicle Application:

FORD

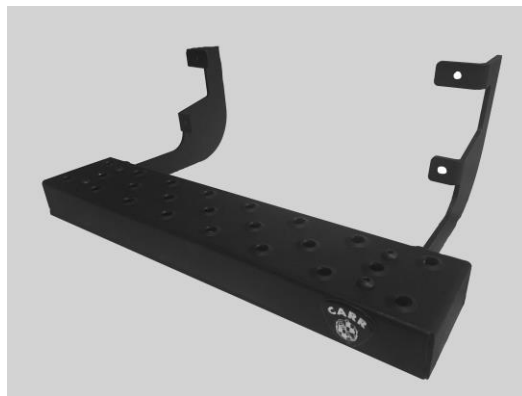
'13-'18 Transit all configurations (**WILL NOT FIT TRANSIT CONNECT**)

MATERIAL NEEDED:

Drill Motor, 5/16" drill bit, 1/8" drill bit, center punch, 1/2" socket, 3/8" socket, Flat head screw driver, ratchet, impact wrench (if available) 3/16" Allen wrench, marker.

MATERIAL FURNISHED:

2 - Steel Factory steps, 4 - Mounting brackets (2 - right, 2 - left), 1 - Hardware pack, 1 - Instruction.



1. Assemble step as shown by using a left and a right bracket with tabs facing inwards. Use 5/16" x 1" socket button head screws with washers and nylon locks nuts. Securely tighten step Do not fully tighten.



2. With step assembled, place step in the desired location avoiding any A/C lines as shown (Passenger vans only) Avoid any bumps or indents to allow both brackets to be parallel to each other. With a marker mark both holes for the 5/16" mounting hardware; top holes do not need to be marked.

NOTE: Passenger van with A/C lines shown.



3. With both holes marked, center punch both marks and drill out with the 1/8" drill bit followed by the 5/16" drill bit. Try to clean out burs as best as possible. Be careful not to drill into plastic trim. The step and brackets will need to be disassembled for the next step.



4. With both holes drilled out use a flat head screwdriver to pry on plastic trim and slide in the U-nuts.



Factory Step Installation Instructions

Part No's: 451001

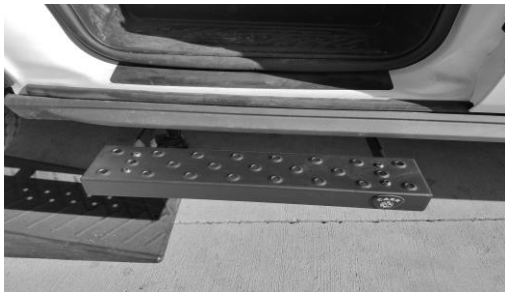


WARNINGS!

- ✓ Do not over tighten the nuts and bolts or damage to the castings and or stripping of the threads could result.
- ✓ FOR SAFE AND PROPER USAGE OF THIS PRODUCT, THE MOUNTING INSTRUCTIONS MUST BE FOLLOWED CAREFULLY AND COMPLETELY.
- ✓ The manufacturer and distributor of this product are in no way responsible for the consumer's failure to adhere to the warnings and directions of these instructions in the event of damage to the consumer's vehicle, other properties and or personal injury.



5. With both U-nuts in place use the 5/16" bolts and washers to secure both brackets to the rocker panel. **Do not fully tighten.**



6. Re-install your step and with the 3/16" Allen wrench and 1/2" socket fully tighten all four button head screws.



7. Fully tighten both 5/16" bolts to U-nuts. Finally with a 3/8" socket install the #14 self-tapping screws to both brackets and be careful not to over tighten them. Your step is now fully installed follow the same procedure for other side.

Carr Pattern Co., Inc.
Warranty Policy

Finishes: Limited Lifetime

Structural Warranty: Limited Lifetime

Warranty Conditions:

- a. All warranties start from consumer's date of purchase.
- b. A new product will be sent out immediately to replace a warranty claim.
- c. The above guidelines apply only to the Original Purchaser.
- d. Original proof of purchase must be submitted for all warranty and returns issues.

Warranty Limitations:

- a. Warranty coverage extends ONLY to repair or replacement of the CARR product. This warranty does not cover the cost of labor, transportation, installation or removal of the product.
- b. Warranty coverage does not extend to damage caused by: collision, fire, theft, freezing, vandalism, riot, explosion or object striking the product, or misuse of the product and/or the vehicle on which the product is being installed.
- c. Warranty coverage does not extend to damage caused by: airborne fallout (chemicals, tree sap, etc.), stones, hail, earthquake, water or flood, windstorm, lightning, the application of chemicals or sealants subsequent to manufacture.
- d. Warranty coverage does not extend to damages caused by: normal wear and tear, abuse, modification or improper installation of the product.
- e. Warranty coverage does not extend to any economic loss or extra expense including (without limitation), payment for the loss of time or pay, inconvenience, storage, loss of vehicle use, vehicle rental expense, equipment rental expense, lodging, meals, or other travel costs.

Other Terms:

This warranty gives you specific legal rights and you may also have other rights that vary from state to state. CARR does not authorize any person to create for it any other obligation or liability in connection with its products. ANY IMPLIED WARRANTY OF MERCHANTABILITY OR FITNESS FOR A PARTICULAR PURPOSE APPLICABLE TO THIS PRODUCT IS LIMITED IN DURATION TO THE DURATION OF THIS WRITTEN WARRANTY. PERFORMANCE OF REPAIRS AND NEEDED ADJUSTMENTS IS THE EXCLUSIVE REMEDY UNDER THIS WRITTEN WARRANTY OR ANY IMPLIED WARRANTY. CARR SHALL NOT BE LIABLE FOR INCIDENTAL OR CONSEQUENTIAL DAMAGES RESULTING FROM BREACH OF THIS WRITTEN WARRANTY.*

*Some states do not allow limitations on how long an implied warranty will last or the exclusion or limitation of incidental or consequential damages, so that above limitations or exclusions may not apply to you.

Guarantee: Every attempt has been made to manufacture and distribute the finest quality products available. Our manufactured products are guaranteed to be free of defects due to workmanship or materials. Distributed products are subject to manufacturer's warranty only.